

## Multi Sensory Room Products

# Interactive Multi Sensory Rooms by Technical Solutions Australia

## Introduction

Carers and Therapists have been experimenting with the concept of Multi Sensory Rooms for a long time. These rooms were often called the Quiet Room, White Room, Snoezelen Room or something similar.

Note: The Rompa Company has instructed us that we must no longer use the word 'Snoezelen' as a generic descriptor for these rooms, as 'Snoezelen' is now a registered trademark of the Rompa Company in England.

In Europe, the White Room has become very popular as an environment in which gentle stimulation and relaxation can be provided. The walls of these rooms are painted white, providing a surface to project coloured images and patterns onto. Various combinations of furniture, lighting and sound are now usually added to modify the atmosphere of these rooms. Equipment ranging from effects projectors, music systems, illuminated bubble columns, vibrating devices and aroma diffusers can be combined to alter the environment in many ways.

## Relaxation

Originating in Holland, "White Rooms" were developed to provide "*people who have sensory and learning disabilities with appropriate relaxation and leisure facilities*"<sup>1</sup>. The "White Room" approach emphasizes relaxation, leisure and the relationship between participants and "enablers". The aim of this approach "*is to allow the individual the time, space and opportunity to enjoy the environment at their own pace, free from the expectations of others.*"<sup>2</sup>

## Active educational programs

Technical Solutions has developed Multi Sensory Rooms that can be used for both relaxation and more active training sessions. These rooms have added switch interactivity to most of the equipment. This allows Multi Sensory Rooms to be used in more active educational programs, where switch skills, cause-effect understanding, concentration and memory abilities can be developed in a focused environment.

**Our Design Service** allows the Multi Sensory Room (MSR) design to evolve through a number of meetings and/or discussions with customers to ensure the most appropriate setup. Where possible, the facilities built into our Multi Sensory Rooms are flexible enough to ensure a wide range of programs and uses can be accommodated.

**The end result is an environment, which will undoubtedly appeal to both students/clients and staff, as well as provide a very distinctive addition to your activities program.**

1. R. Hutchinson & J. Lewin, *Sensations & Disability*, U.K., ROMPA, 1994, pp8

2. *Ibid.*

**Multi Sensory Room Products**

**Bubble Columns**

**The Bubble Column is a feature of the MSR. The bubbles gently change colours creating a soft mood which provides a focus point in the room. The effect of the columns is dramatically enhanced by the mirrors mounted behind them.**

**The Bubble Column can be run in various Display Modes to suit your sensory environment.**

**Disability Access**

**The optional Switch Interactive Model has a special wireless remote control that includes a large 'Big Red' switch. It also has a socket fitted so that other switches can be plugged in. This allows the user to control Columns' Lights and Bubbles by activating a suitable switch. Pressing once will start the display; pressing again will turn it off. A range of light pressure switches can be used to operate the Bubble Column.**

**Display Controls**

**S+ S- Speed Adjusts the speed**

**B+ B- Bright Adjusts the light brightness**

**M+ M- Mode Steps through the various light flashing modes as per the following table**



No.	Patterns	Remarks	No.	Patterns	Remarks
1	Static red	Brightness is adjustable, Speed is nonadjustable.	14	Blue flash	Speed and Brightness are adjustable
2	Static blue		15	Purple flash	
3	Static purple		16	Green flash	
4	Static green		17	Yellow flash	
5	Static yellow		18	Cyan flash	
6	Static cyan		19	White flash	
7	Static white		20	R/B crossfade	
8	Three-color jumpy change	21	B/G crossfade		
9	Seven-color jumpy change	22	G/R crossfade		
10	Three-color gradual change	23	Fade out and fade in whole		
11	Seven-color gradual change	Speed is adjustable, brightness is nonadjustable	24	Random flash	
12	Three-color running	Speed and Brightness are adjustable	25	AUTO	1~24
13	Red flash				



**Multi Sensory Room Products**

**Mirror Ball, Spotlight and Colour Wheel (MBSL)**

The Mirror Ball, Spotlight and Colour Wheel combination casts a fascinating pattern of dappled light spots across the room. A special slow speed rotator has been used to give a relaxing, slow movement. The mirror ball motor and pin spot lamp can be wired to individual switches in the control area, and can be switched on separately. Switch off the mirror ball to create a pleasant static pattern of light spots around the room. The speed of rotation of the mirror ball motor can be adjusted. For the best effects walls should be white. **Cordless Interactive Control**



**(Optional)-** The Spotlight can be turned on and off in an interactive (switch activated) mode – a great reward for switch use.

**Fibre Optics:**

**The Side Glow Fibre Optic Spray)**

The spray of side glow fibre optics constantly change colour along their length. The sprays come in 2 or 3 metre lengths and are made up of 100 or 200 fibre optic strands, which are safe to hold, stroke, wrap around the body and lie on. The changing colours and soft glow encourage the focusing of attention and have calming effects. They are extremely



effective for individuals with limited visual ability **Cordless Interactive Control (Optional)-** The sprays can be turned on and off in an interactive (switch activated) mode – a great reward for switch use.



**Fibre Optic Trolley – Optional (FOTROLLEY)**

This optional trolley is a great way to safely store your Fibre Optic Spray and easily wheel it around the building. The light source is secured neatly out of the way in the base of the trolley and a tray on the top holds the fibres during storage.



## Multi Sensory Room Products

### Activity Walls

The Activity Wall is often the major centre of activity in the Sensory Room.

The Activity Wall is a modular unit that incorporates 300mm square “panels” over the entire front surface. Each panel (or multiple of panels) is a self-contained activity, texture or effect (Purchased separately as required). The wall can change and grow with a school’s needs and budget.

### Base Module (ACTWALL)

The Base Module is approximately 1Metre tall x 1.2Metre wide and fits 12 panels. For larger installations, multiple Base Modules can be joined.



### Mobile Activity Centre (ACT-MAC-BASE)

The Mobile Activity Centre is a portable version of our popular Activity Wall. It is ideal for those who wish to bring sensory activities to the classroom rather than take the class to a sensory room.

The Mobile Activity Centre is designed for stability and rolls easily on casters that can also be locked when the unit is in position. The centre is double sided and can fit up to nine of our regular 300mm square activity panels on each side. The Activity Centre is great for exploration and, being double sided allows more space for two or more people to ‘explore’ at once.



### Activity Panels

Panels are designed to meet specific educational targets including sensory integration, physical coordination, cause/effect, voice control, memory, social interaction. “Spare” multi coloured tiles are supplied to fill all areas not containing an activity.

Many panels are available, call us and see our catalogue or web site [www.tecsol.com.au](http://www.tecsol.com.au)



**Multi Sensory Room Products**

**Activity Wall – Activity Panels**

Panels are designed to meet specific educational targets including sensory integration, physical coordination, cause/effect, voice control, memory, social interaction. “Spare” multi coloured tiles are supplied to fill all areas not containing an activity.

**Plate Switch Activated Fan -(ACTW-SAF)**

A stream of air blows against you as you press the switch.



**Sensory Bag - (ACTW-SBP)**

Totally non-electronic!  
Reach into the bag and see what you can find. Comes with a collection of coloured tactile objects.



**The Ball Chute – (ACTW-BC )**

Place a ball in the top of the chute and it disappears into the box, reappearing half way down, and then popping out the bottom. Lights flash as the ball goes on it's journey and it beeps as arrives at the bottom. This panel is positioned diagonally and uses 3 panels.



**Tactile Roller Brush Panel – (ACTW-RP)**

A purely tactile panel, comprising of a row of wooden rollers which spin when touched and round bristle and rubber nipple brushes.

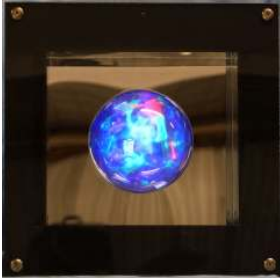


**Vibrating Plate – (ACTW-VP)**

The whole plate vibrates when pressed.  
Users can also lean against the plate if placed low down on the wall.



**Multi Sensory Room Products**

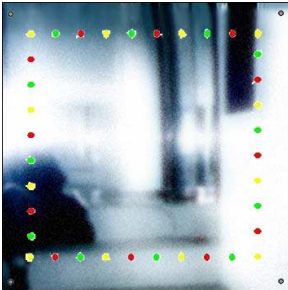


**Laser Sphere Dome**

**ACTW-LSL**

An ever changing mesmerising light display. The dome ball is mounted inside a recessed mirrored compartment that enhances the lighting effect. **\$440.00**

**Mesmerising**



**SWITCH ACTIVATED SOUND PANEL - ACTW-**

**5S**

Each of the four switches generates a different sound effect when pressed. **\$440.00**



**Mirror Tile & Light Chaser -**

**ACTW-MTLC**

A pleasing pattern of small coloured lights step around a safe acrylic mirror. \$475.00 Visual

**SWITCH ACTIVATED**

**MUSIC PANEL**

**ACTW-5M**

Each of the four switches plays a different melody when pressed.



**Plasma Panel**

Visual pattern. Flashes of 'Lightning' follows your fingers as you move them over the surface.

**ACTW-PP**

**Plate Switch Light Display -**

**ACTW-PSALD**

A delightful flashing light pattern runs while the switch is pressed.



**Mirrored Bead Chain -**

**ACTW-MBC**

Moving the bead chain aside reveals your reflection in the mirror – a great tactile experience.



**Multi Sensory Room Products**



**Rotating Timber Cogs**

For those who love to spin and rotate wheels.

ACTW-SP \$187.00

**Colourful Abacus** \$220.00

**Rotating Blocks** \$ 220.00 left

**Rotating Colourful Cylinder** with seek n find items enclosed \$220.00

**Digital Photo Panel** – you supply your own USB stick with your favourite pics \$440.00

**Castor and wheels to rotate.** \$120.00

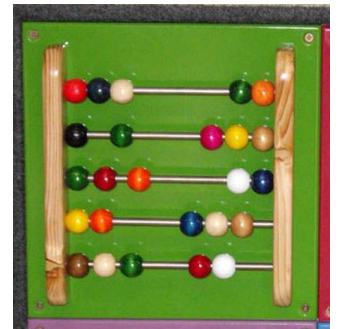
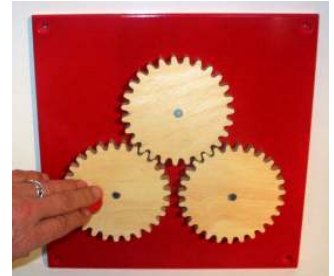
**Cosmic Ball dome with lightning patterns.** \$440.00

**Neon Smiley Face Light** \$300.00

**Ipad holder** with power supply \$380.00

**Large Buttons with Animal Sounds** \$330.00

**Large Buttons with Buzzer Sounds** \$330.00



**Chat with Row Prosser** for custom made panels.

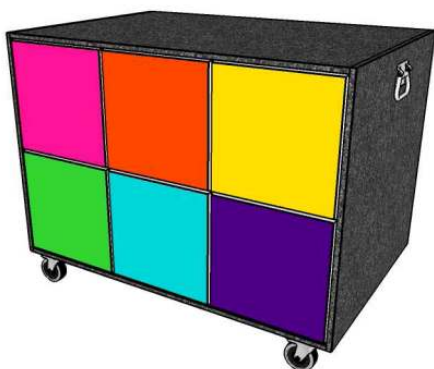
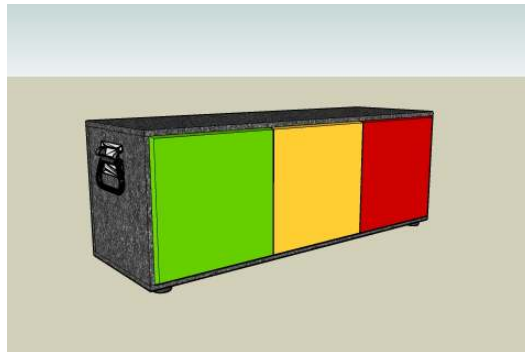
**We have a large variety of Tactile\*Textured panels available also from \$88.00 - \$125.00**



**Multi Sensory Room Products**

**Now Available**

**3 Panel Portable Activity Wall**  
**Portable 3 panel activity unit-with handles**



**Portable Early Intervention wall**

9 panels either side, lockable wheels, handles.  
 Approx 70cm high x 90cm long x 62 cm wide.  
 Special tactile panels available, all panels interchangeable.

**6 and 9 Panel Activity Wall**





## Multi Sensory Room Products

### **Musical Tactile Walls (MSR-MWT)**

The Musical Tactile Wall unit has a series of tactile and visually unique surfaces including eight large switches. As each switch is pressed it will activate a sound or combination of sounds, generated by the built in midi keyboard.

The keyboard can be programmed to play a wide range of different musical instruments.

The Musical Wall can play individual notes, chords, percussion or sound effects.

A mode button on the Musical Wall control panel can be used to step through various musical options. Eight switch sockets are also fitted on the control panel. Plug up to eight switches into these sockets and several students can form a band. The optional Technical Solutions Mat switch Set can be plugged in to create a musical floor. (see below)



### **Musical Runway Switch Set - MATSW-8**

A tough vinyl floor mat has sewn in pockets containing a set of eight mat switches.

Walk, crawl, stomp, jump or roll your wheel chair over the magical music runway to create your own musical notes and sounds. Portable keyboard cabinet available to safely house your keyboard, mat set and other equipment  
Midi switch box and Midi Keyboard required.



### **Keyboard Cabinet - Lockable**

Mobile cabinet features: lockable lid, casters and storage for MIDI Box, Keyboard, Musical Runway, Invisible Keyboard, cables etc. Purchased separately.

### **MSR-KCAB**



### **Big Cushion Set of eight**

pictured below can be used with the above system also. 60cm square x 10cm thick

### **Portable Lockable Cabinets.**

Carpet wrapped, lockable, easily moved around to different areas of your facility. Create your own sensory trolley. Store your sensory items - Items shown sold separately.

Size: 104cmH x 93cmW x 51cmD

### **MSR-P-C**



**Multi Sensory Room Products**  
**Tactile Panels**

**Our new Tactile Corridor panels contain a wide variety of colourful tactile objects.**



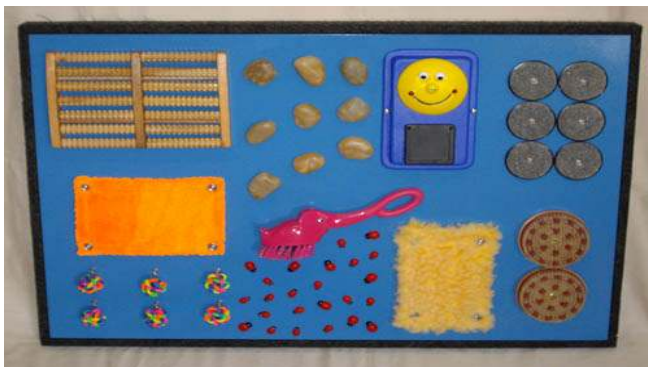
**Plush, silky textures, bead chains, timber rollers, chimes, rough and smooth surfaces that will engage a variety of users and staff.**

**On each high gloss panel there is one battery item which may contain music lights, vibration or visual stimulation.**

**The panels are enclosed in carpet wrapped unit and are mounted to your corridor wall.**

**60cm wide x 90cm long x 5cm thick**

**MSR -TCP \$1000.00 each**



## Multi Sensory Room Products

### **The Midi Switch Box –MIDISW8**

When plugged into any Musical Instrument Digital Interface (MIDI) instrument (normally a keyboard or synthesiser), Plug in up to eight special switches to the Midi Switch Box and remotely play notes, chords, percussion sounds and effects from your keyboard. In percussion mode, several students can be given switches and form a percussion band! MIDI Keyboard sold separately, or order your Midi Switch Box as part of the **Invisible Keyboard Kit** below and have even more musical fun..

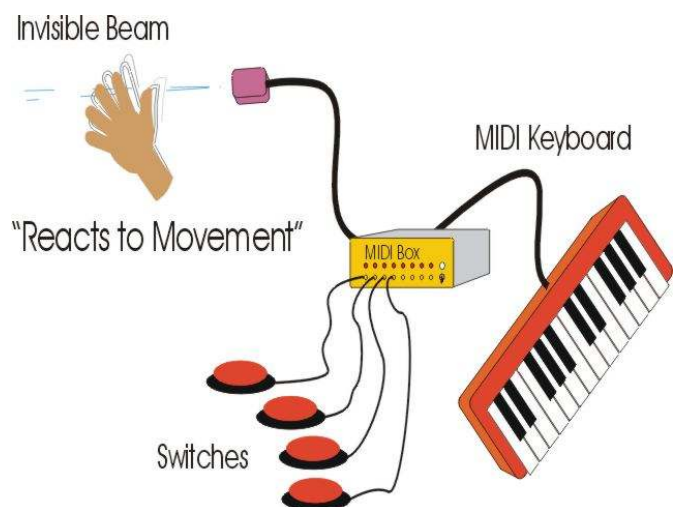


### **Invisible Keyboard Kit - (MIDI-IKSYS)**

#### **As an optional extra with the Popular Midi Switch Box.**

The Invisible Keyboard detects a person near the sensor and creates music as the person moves. The MIDI Control Box then sends MIDI signals to trigger notes, chords, percussion sounds and effects on the MIDI keyboard.

- Anyone can make music:
- Responds to full body movement or just slightest finger or facial twitch.
- Encourage and reward movement
- Simple to set up and operate
- Plus, all the same features as our standard MIDI Box
- All at fraction the cost of imported units



### **Amazing “Hands Free” Music!**

The Invisible Keyboard senses the distance a person or object is from it by sending out a beam of invisible infra red light. It has a range of up to 1.2 metres. When the person moves within the invisible beam, the sensor detects the change in distance and varies the MIDI music accordingly. This results in a wonderfully responsive "hands free" instrument for fun and therapy.

- The full **Invisible Keyboard Kit** includes Sensor, MIDI Box, Casio Keyboard & Cables
- Plug in our **Mat Switch Set** (See previous page) to create a fun musical walk way!
- Or plug in **Big Cushion Set of Eight**

**Multi Sensory Room Products**

**Effects Projector 2013**

**Solar 250 Led** Solar LED is quieter, runs cooler and the projected light appears brighter.

A wide variety of visual effects can be obtained from the effects projector. By changing the effects wheel, images ranging from abstract patterns to particular themes can be projected. The slowly rotating images from the effects projector create a wall of colour and movement. Whole activities can be planned around a theme wheel image, or one can just sit and watch the abstract liquid wheels.



**Dual Rotator Now Available to suit standard**

Rotator & Effects Wheels required to complete the unit.

Max Wheels have one rotation every 6 minutes and the standard effect wheels have one rotation every 2 minutes.

Liquid -variety

**Effects Wheels: More available**



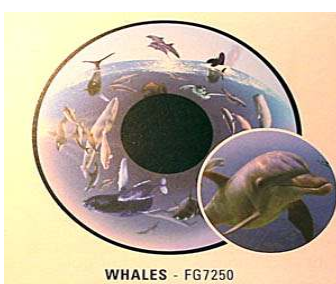
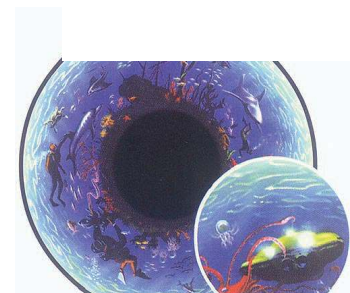
Fireworks



Shapeland



Under the Sea



Clouds



Aviation



**Multi Sensory Room Products**

**MAX EFFECT WHEELS**  
**ONE 1 ROTATION EVERY 6 MINUTES \$160.00 each**

Coral Reef FG7974

Day & Night Sky FG7972

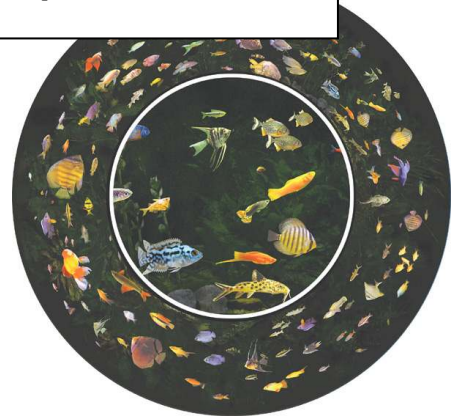
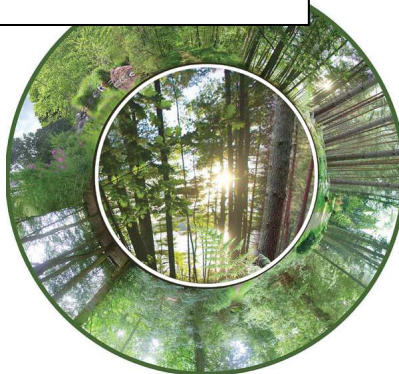
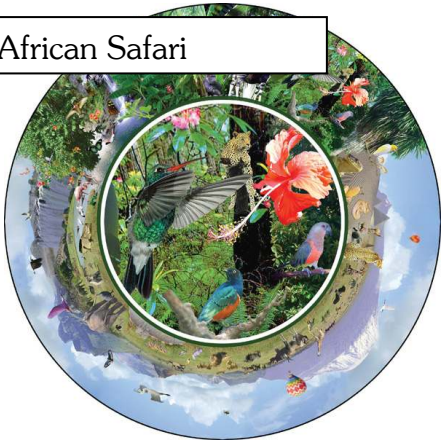
Meadows FG7967



African Safari

Forest FG7971

Aquarium FG7973



Coral Reef FG7974

Winter Sports

Woodland



### **Multi Sensory Room Products**

#### **Cassette/radio/CD Player – Adapted – ACR-CD**



This quality stereo Radio/Cassette CD player has been modified to allow on/off control using one of our range of switches. The switch can be plugged into the special CD control socket, which allows the user to access the play/pause button. Alternatively the users switch can be plugged into the special Radio/Cassette control socket. Here the added circuitry allows either 'Latching' (press once for on, again for off) or 'Momentary' control of the radio or cassette.

Switch purchased separately.

Also available –Protective box to enclose CD player.

#### **Plasma Lamps**

Discover the magic of plasma. The lamp is filled with a gas that glows when electricity flows through it just like lightning. When nothing is touching the lamp the current will flow anywhere inside. Very visual two styles available Fireball or Storm. Approx 35cm tall , 8cm wide base.

**LAMP-ST LAMP-P 1**



**Multi Sensory Room Products**



**New Portable Plasma**

Very visual -'Lightning' flashes will follow your touch around. Sparkles away.  
 Comes with carry handle and rubber feet.  
 Dimensions: 36cmH x 37cmW x 27cmD  
 Plate Dia. 15cm



**Portable Vibrating Panel Box**

The whole plate vibrates when pressed. If position down on the ground children can lean against the plate. Comes with carry handle and rubber feet. Requires power.

Demensions 36cm H x 37cm W x 27cm D

**MSR-PVP \$450.00**

**Sensory Luck Dip Box**

Reach into the bag and see what you can find.  
 Comes with a variety of tactile objects.(squishy, rough ,smooth, aroma sack, clicky things.)  
 30cm Square, carry handle, rubber feet.

**MSR-SLDB**



**Mood Lighting Panel - Wall Mounted Or Portable**  
 Lovely ever changing patterns and lights. Supplied with plug pack. Boogie Light WAVE is a square tile with a contoured front. The smooth, wave-like front, color changes flow from top to bottom in 3 selectable speeds to fascinate you and your friends. As stand-alone or wall-mounted, it creates a unique atmosphere!

35cm x 35cm x 4cm control panel at the top.

**MSR-BW \$99.00**



**Multi Sensory Room Products**

**Light Zone**

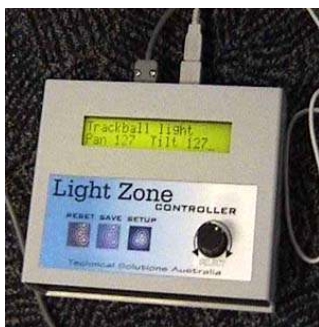
The Light Zone System combines lighting effects with movement in a novel and motivating way. Teachers and therapists can utilise the feedback and motivating stimuli to provide enhanced sensory experiences for their clients. The system is based on a professional moving light beam projector, which can direct a bright, colourful image almost anywhere in the room. Technical Solution's purpose built control system and software provides a great variety of activities and access methods.



**Light Zone – The Great Motivator!**

The Light Zone System can provide a fantastic motivational tool. Structured and free-form activities using the Light Zone can assist develop and strengthen a range of skills and abilities including:

- Social skills and cooperation
- Team work
- Hand/eye coordination
- Tracking
- Memory
- Colour recognition
- Scanning skills
- Switch/joystick/trackball skills





**Multi Sensory Room Products**

**Vibrating Mattress (MSR-VM)**

This almost single bed sized (90cmx180cm approx.) Vibrating Mattress provides wonderful tactile stimulation. The vibrations can be set to run on a fixed pattern, be sound activated by a microphone or linked to a music system for 'good vibrations' in time with the music. When microphone is plugged in to the mattress so you can actually feel the sounds you create - great for speech therapy activities.



**Stereo System**

A good quality stereo system is essential if music is to be a part of the MSR. We have found that the "Mid sized" systems are ideal. They support both cassettes and CD's, and have separate speakers and a remote control. Our systems feature an optional cordless link to the Vibrating Mattress above.



**Tac-Tile - Wall Hung Activity Panel (MSR-TAC-TILE)**

This unit is an ideal space saver!

An exciting range of tactile activities are mounted on a large panel that is held securely on a wall bracket. Tactile activities include. An Abacus; a Velcro compatible carpet to place your own sensory items; a Lighted Musical Plate with music, vibration & small light; a Mirrored Bead Chain; a Timber Tactile Roller Panel; a set of Musical Chimes; a Mini Dome Alone with music and spinning confetti; a panel of assorted textured surfaces; and 3 timber rotatable cogs. Small wheels allow the unit to be wheeled from room to room for use and storage.



### Multi Sensory Room Products

#### **Glowing OGGZ**

These rechargeable wireless OGGZ slowly and gently change colours like magic! Pass them around so everybody can enjoy their soft tactile feel and soothing light display. Recharging station included



#### **Colour Changing Lamp**



Shaped like the Lava lamp but without heat, soothing colour changing led lights that creates a soothing atmosphere for any Sensory Room or clients bedside table.

Mains power, 34cm height, silver base and tip.  
AT-CCLAMP

#### **Aqua Bubbles (Limited \$66.00)**

Illuminating LEDs! Watch the calming colorful bubbles as they float about while the multi-colored lights continuously change. Great for increasing visual attention and cause and effect. Can be used with or without a capability switch Size: 27cm"H x 13cmW. Requires 3 AA Batteries



#### **TvQuarium with Light**



A wonderful vibrant collection of sea creatures to light up your room. Watch the fish swim about in the mini aquarium. 20cm long x 18cm high x 5cm deep  
**T-TQL**

#### **Laser Sphere Lamp**

Laser Sphere Lamp

This new visual item has two distinctive looks. One is the plasma dome with beautiful colour changing shapes and lights on the inside of the dome. The second look when you remove the dome is a laser display. Tilt towards a wall or roof for ever changing and moving colours and splashes of light. MSR-LSL 14cm H x 12cm diameter x 14cm deep with plug pack. **MSR-LSL \$55.00**



**Multi Sensory Room Products**

**WATER COLORS - LIGHT & SOUND SCULPTURE**

Experience an ever-changing spectrum of light with Water Colours™. Utilizing advanced LED Technology (not to be confused with a simple colour wheel), the glass sphere reflects colour and light to create dramatic glowing, lighting effects. It can even project colour onto your ceiling!

**Includes**

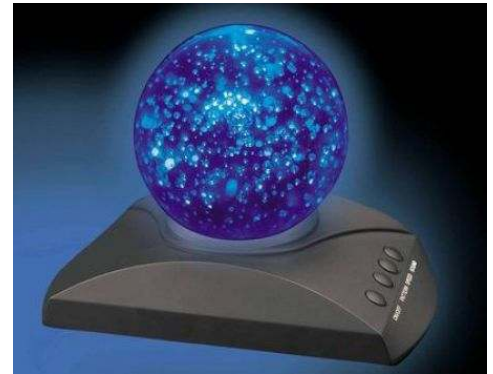
**ELEVEN built-in lighting functions. Also features 6 unique Nature Sounds which operate in sync with the lighting effects.**

Requires 3 AA batteries, not included.

Plug pack available also.

Dimension – 18cm x 14cm x 10cm

**CYI-WCLS -\$77.00**



**Foam Fountain**

**Amazing hypnotic visual display.**

Watch as the foam pellets simulate the look of a dancing water show with beautiful soft colour changing lights. Variety of modes to choose from includes sound activation.

The unit comes assembled with polycarbonate walls. A fan in the base creates the effects.

16cm x 16cm x 41cm high

**CYI-FF \$180.00**



**Multi Sensory Room Products**

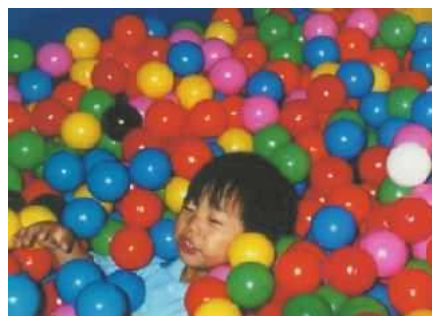
**Ball Pools**

Ball Pools offer a safe and physically supportive environment for adventurous play or quiet relaxation.

The balls allow the user considerable freedom of movement, whilst providing the security of contact over a large area of the body.

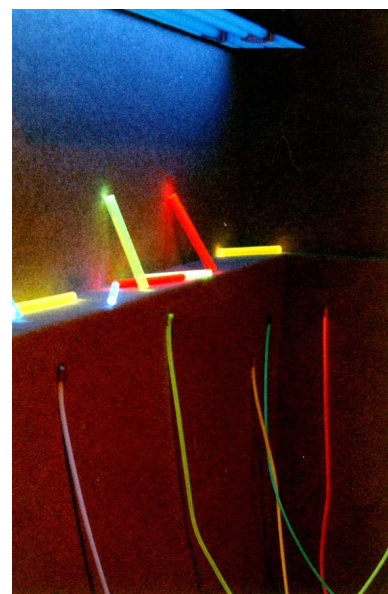
Any Size Made To Order!

We can supply a ball pool made to suit your space and your needs.



**Ultra Violet Wall**

In a dull room, many materials have a fascinating glowing effect when illuminated by ultra violet light. Artwork painted in fluorescent paint is very rewarding. The UV Light is enclosed in a case that restricts the light to a downward angle. This reduces the likelihood of anyone looking directly at the globe for any length of time. Objects can be easily displayed or played with on the velcro wall below the lights. Many objects can be obtained locally that shine well under ultra violet light.



### Multi Sensory Room Products

#### **Puff Massager - CP-PMPUFF**

This plush covered pillow massager (right) fits in the palm of your hand and is held securely with an elastic strap. **PINK ONLY**



#### **Bug Massagers - AT-BUGV**



Generates excellent sensory feedback. Start them vibrating by switching on at the nose or make them interactive by plugging in your own switch. Hold around them by the back, and rub their feet against tight muscles. Specify: Adapted or Un-adapted.

#### **Tubular Vibrator (KA1151)**

Takes 2 x C cell batteries. Simply turn on the unmodified version, position it and enjoy. The adapted version can be operated interactively by users with a disability – a great tactile reward for switch use. The 160cm long Tubular Vibrator can be wrapped around almost any part of the body providing the individual with enjoyable vibro-tactile feedback KA1151A  
KA1151-switch adapted.



#### **Wrap Around Massager**



Flexible! The flexible tube can wrap around any part of your body. A convenient hook closure keeps the vibrator in place. Available switch adapted or unadapted.

Size: 122cmL x 3.5cmW.

Requires 2 C Batteries.

**Unadapted:** KA1163 - \$55.00 [GST] **Special 2013**

**Switch Adapted** KA1163A \$88.00 **Special 2013**

#### **Vibrating Pillow-(VP)**

Sensory vibrating pillow -to activate just lay,lean.or sit. Also available switch adapted requires your own switch. (2 D size batteries)  
New vinyl model now available, with corduroy cover.  
VP-V with cover \$45.00



#### **Vibrating Back or Seat Massage Cushion**

Press your switch for soothing vibration. The thick contour, corduroy cover can be removed for washing. Colours will vary.  
Size: 35cm x 32cm x 13cm Requires 2D size batteries.

**Unadapted:V-BMC-UM \$40.00 [GST]**

**Switch Adapted V-BMC \$66.00**



**Multi Sensory Room Products**

**Bonsai Tree**

Our new Bonsai tree with blue led lights adds a lovely glow in any room, great addition to sensory room or aged care facility, mental health units or your own living room.

Approx 50cm high, add the flowers to the end of the branches or leave some off to have just the bright blue light exposed. Base approx 15cm diam

**BT-B \$66.00**



**Jelly Fish Tank**



This beautiful, mesmerising jelly fish tank is very calming to watch.

There is a pump and either end of the lid which moves the jelly fish around the tank in a majestic way, the led lights change slowly through a variety of soft calming colours.

43cm wide X 25cm High X 7 cm Deep 7 jellyfish

**JFT-L \$110.00**

**Medium Jelly Fish Tank – JFT-M \$66.00** 25cm tall x 18cm wide x 7cm deep -3 Jelly F



**Fibre Optic Twig Tree**



This latest fibre optic twig tree has gently colour changing small flowers, which have a soothing visual stimulation.

This gently changing colourful light display would be a soothing addition to any sensory room. 60cm tall **FO-TT \$66.00**

**Multi Sensory Room Products**  
**New Weighted Products**  
**For Calming**



**Weighted Lap Animals**

Lovely soft fabric, ideal to pet and stroke, contains weight of approx 2.kg Great calming effect for a variety of ages.  
40cm x 26cm **W-AC \$55.00**



**Large Weighted Lap Animal**  
**45cm x 38cm 3kg approx**

**Large \$66.00**

Lady Bird - W-LB  
Dog - W-D  
Bumble Bee - W-BB

Bear - W-B  
Duck - W-D

**2kg Available \$55.00**



**Weighted Cuddle Animals**

Cow , Monkey and Monkey currently available.

32cm tall x 17cm wide

**W-MONKEY \$55.00**

**W-COW \$55.00**

**W-Teddy \$55.00**

**More animals available**



**Multi Sensory Room Products**

**Weighted Lap Blankets**

Are a very practical product to provide clients with a calming deep pressure sensory input which also helps in concentration. Great for classroom situations, travelling or for a calming tool for anxiety, great for all ages. **2.1kg -washable , 45cm x 39cm \$55.00**

**3kg now available \$77.00 Colours will vary**



**Weighted Vests** can help the user be calm by providing a deep pressure sensory input. Our vests are fully washable with zip front, evenly distributed weight . The side panels are 10cm wide Velcro which can be adjusted to suit a variety of different size clients .

**Medium Vest \$165.00**

53cm long x 45cm wide 3.6kg  
10cm Velcro sides that can be adjusted. Weights are sewn in.  
WVM \$165.00

**Large Vest \$165.00**

59cm long x 48cm wide, 3.9kg  
10cm Velcro side that can be adjusted. Weights are sewn in.  
WVL \$165.00  
Unisex sizing fits men and women, black only.



**Shoulder Wraps 2011**

Weight can be adjusted internally by holding the panels at the front upwards to tip more or less weight over the back.  
Removable cover, very comfortable design to assist in relaxation.

Large -80cm long x 40cm back width, lapels 17cm wide. 3kgs (Green)  
Pictured with cover.  
**WSWL - \$77.00**

Medium -61cm long x 42cm back width, lapels 13cm wide. 1.8kg (Blue)  
**WSWS- \$66.00** (pictured without cover)



All  
sewing team.

weighted products above are fully washable, the weights enclosed are non toxic plastic pellets.Made by our TS





Technical Solutions Australia Pty Ltd

ABN 14 063 349 502  
inquire@tecsol.com.au  
www.tecsol.com.au

109 Ferndale Rd. Silvan  
VIC Australia 3795  
PH (03) 9737 9000  
Fax (03) 9737 9111

---

**Multi Sensory Room Products**

**Multi Sensory Room Products**

**Fibre Optic Wall**

Just over 2m tall and 1m wide. The Fibre optic wall twinkles and glows whilst changing colours. Suits clients of various abilities including aged care will be mesmerised by this magical effect. Great addition to any sensory room. Encased in a safe polycarbonate sheet with reflective acrylic mirror behind that adds to the effect.

Pictured left in a dark room and right with the lights on.

MSR-FOW



**Fibre Optic Hoop**

Create a new look to your existing Fibre Optic Spray

This optional Fibre Optic Hoop is a great way to make your Fibre Optic Spray into a curtain. The hoop hangs from the ceiling and holds the fibres in a spectacular circular curtain formation.

**Fibre Optic Hoop: - FO-HOOP**

**Fibre Optic Spray 3m & Light Source Extra**



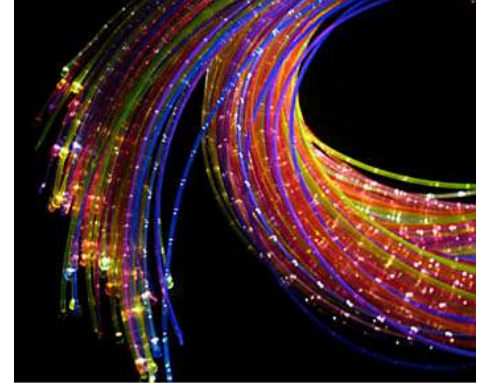
## Multi Sensory Room Products

### Coloured UV

#### Poly-Fibre Optic Spray

- Can be used with or without UV Lights
- Can be purchased as a complete working kit
- Spray only (without light source) can be purchased as an add-on alternative to your existing clear spray

The changing colours and soft glow encourage the focusing of attention and have calming effects. They are extremely effective for individuals with limited visual ability.



•

These UV side-sparkle kits consist of cracked polymer fibres in UV reactive sheathing. Up to 8 different colours of tails can be incorporated into one harness.

Like all our fibre optic lighting products, these UV side-sparkle poly optics are completely safe to touch, as there is no electricity carried through the fibre tails. The effect provided by these kits is different to that given by the standard side-sparkle kits. The tails do not change colour, but by utilising the shimmer wheel which is supplied as standard, a stunning sparkling effect is achieved - even without the use of UV light. Under Ultra Violet black light, which is increasingly being used in treatment and sensory play rooms in hospitals and schools, the tails also glow dramatically.

Prices vary as follows, depending on the length of the spray and number of strands (or tails). **Prices for FULL KITS include light source and colour wheel:**



### Sparkling Carpet

"Our range of star carpets is made using high quality carpet with optical fibre woven into the pile. It can be used on top of existing flooring, or can be attached to a wall.

The fibre optics are lit by a powerful 50W tungsten halogen lightsource, which comes factory fitted with a six segment colourwheel. This creates a beautiful shimmering effect of constantly changing colours.

Please note that the carpet should not be used in areas where heavy wear is likely, such as doorways, and it is not suitable for use in areas where heavy weights may be pushed over it."

**MSR-SC \$1650.00 (GST) 1m x 2m**



## **Multi Sensory Room Products**

### **Fibre Optic Curtain**

"These sensory Fibre Optic Curtains consist of an aluminium tube with long tails of sensory fibre cascading from points along its entire length.

The tube can be mounted on a wall, and produces a stunning curtain of light, the lightsource is mounted securely to the wall on your shelf. The tube is finished in white, and the fibre optic tails continuously cycles through six different colours

A Great addition to any Sensory or Calming Room. 1.5m tube width with 99 strands, 2m tall

**Fibre Optic Curtain - MSR-FOC \$1980.00**



### **Gumleaf Chair**

This hanging sensory chair can induce a pleasant relaxing effect for clients. It comfortably cradles your body and with the gentle swinging motion you can enjoy the visual effects of other sensory items in your sensory room. The Gum leaf Chair comes with a chain and safety rotational swivel.

*Note that it must be used under adequate supervision to avoid rough play. Ceiling mounting hardware is not included. A suitably qualified builder should be employed to provide an adequate ceiling mount.*

Gumleaf \$2090.00  
Stand Also Available \$1800.



**Multi Sensory Room Products**

***MASSAGE CHAIR 150***  
***Token Operated Massage Chair.***

**BENEFITS Of Massage Chair 150**

- **Enhance client comfort and state of mind with the calming, relaxing effect of the Massage Chair**
- **Effective tool for behaviour modification**
- **Popular reward for good behaviour**
- **Suits Adult Support Services that deal with clients with autism and other conditions that would benefit from periodic relaxation**
- **Also great for rejuvenating tired staff and increasing energy levels**

**FEATURES**

- 6 wheel advanced massager for total back coverage
- 5 different styles of massage including knocking, kneading, shiatsu, synchronous knocking and synchronous kneading
- Soothing calf massage
- Automatic or fully adjustable massage strength settings
- Separate token box with in-built counter
- Variable time limit of 2 min, 3 min or 4 min per token
- Digital display for time remaining
- Quality PU leather to ensure longer life and durability
- Anti-bacterial coating on upholstery
- Roller wheels on base for easy relocation
- Can be used with or without the remote control
- Heavy duty motors and internals for reliable long term operation
- 6 month warranty on parts



MSR-MC-150

**Multi Sensory Room Products**

**Weighted Blankets, Shoulder Wraps and Lap blankets**

Weighted Blankets can be an aid to deep pressure touch stimulation (DPTS). This is believed to release a chemical in the brain, which naturally calms. This may prove beneficial for children, teens and adults affected by ADHD, ADD, PDD-NOS, those on the Autism Spectrum. Sensory Integration Disorder, Bi-Polar or have other sensory issues.

Weighted Blankets may also be useful to provide a calming soothing effect for any clients.

Our Weighted Blankets are made of 100% Cotton Drill. Ties in the corners secure the insert to the cover and ensure that the weight stays spread evenly across the blanket. Weights can be added or removed from velcro closing pockets. The covers are also closed by velcro. Weights enclosed are plastic polly pellets that are sewn in calico bags. The entire blanket ,cover and pocket bags are 100% fully washable.



**Small 104cm x 78cm 4.9kg approx, 35pockets  
AQUA ONLY**

Each pocket bag is 140g this can be inserted into the pockets across the blanket as desired. Pocket openings secured by Velcro.

**Large 104cm x102cm approx 6.9kg ,49 pockets.**

**JADE GREEN ONLY** Each pocket bag weights 140g this can be inserted into the pockets across the blanket as desired. Pocket openings secured by Velcro



Extra Covers Available



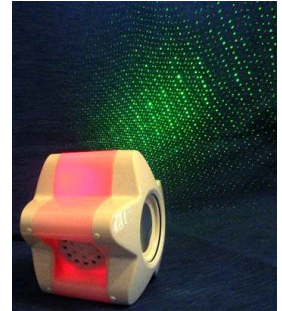
**Multi Sensory Room Products**

**Star Projector Mini**

The latest Laser Star Projector is amazing with slow moving stars and patterns. Looks amazing in a dark room or positioned towards a wall. Modes - 1. Static stars. 2. Is slow moving stars & patterns 3. Faster patterns & stars.

14cm H x 14cm L x 11cm wide

**MSR-STARM \$180.00 (GST)**



**Mood Dome**

This amazing colour changing light has options for you to choose your favourite colour, the speed it fades and brightness. You can choose to let it scroll through its colour pallet or leave it static on a colour or the rainbow pattern. Great feature of any calming or sensory room, early intervention, mental health or aged care facility.

30cm in diameter, with built in stand. **MD \$180.00 (GST)**



**Aroma Diffuser – Fan Driven**

The scents from the essential oil diffuser can create an identifiable room that becomes associated with relaxation and pleasure. Our diffuser has an internal fan to distribute the aroma, so it has no dangerous hot surfaces.

**MSR- AD \$143.00**

**Aroma Difuser Genie**



This new aromatic machine releases the refreshing essential oil into the air, no heat involved, mellow lighting a feature also as you watch the vapour rise from the genie base. Four functions in one, humidifier, purifier, ionizer and night lamp in one. Easy to use two modes 1. Continuously for 2hrs or 30secs on 30secs off automatically turns off.

Dimensions: 13x31cm



**AD-GENIE \$180.00**

### Multi Sensory Room Products

#### **Snow Machine**

The Snow Machine is a fascinating visual addition to any Sensory Room, all ages will be entranced by the beautiful flowing beads and soft colour changing lights. There are fans in the base of the unit, when you press the switch this will activate the unit for approx 2 minutes and then turn off. We have also added a ON/OFF switch on the top of the unit at the back so that the Snow Machine can be just a visual display for your clients and staff to relax and enjoy.

Height 1 metre x 30cm wide and deep, outside is carpet wrapped,  
**MSR-SM \$1200.00 (GST)**



#### **New Fan Box**

Push the switch and feel the air blow out towards you. There is also back lit lights in the fans that light up. The fans and lights run for approximately 8 seconds with every push of the switch. This unit is carpet wrapped on the outside with a high gloss paint on the front panel and is wall mounted.

Size approx 90cm tall x 30cm wide x 30cm deep

**MSR-WMF \$880.00**





**Multi Sensory Room Products**

**TS Fibre Optic Curtain - Amazing tactile & visual display.**

Carpet wrapped pelmet mounted to your wall.  
width 94cm x 26cm x 17cm , 1.5m approx length of fibre optic tail  
MSR-FOC-TS \$2400.00



New MSR Led Colour Flood Light includes remote control – choose your own colour



### **Multi Sensory Room Products**

#### **Tower Of Colour MSR-TOC \$1500.00**

A sound-activated switch activated explosion of multicoloured lights! The more noise you make the higher the lights climb up the tower. The Tower Of Colour can also be left to run on their own or used as a switch operated activity.

#### **Operation**

A control panel is located on the top of the tower. The GREEN button selects between Sound mode, Switch/Display mode and off. The toggle switch is normally left in the ON position except when using an external switch and the large socket is for plugging in the switch. The RED button changes the light pattern

The power socket, power switch and microphone socket are located low on the left side of the tower.

#### **Turning on and off:**

- Plug in the power cord and turn on the small power switch just above the power socket
- In practice, the unit can be turned on and off with this switch or at the GPO (Power point)

#### **Display Mode:**

- Move the toggle switch to ON.
- Press the GREEN button up to 3 times till the display starts
- Now press the RED button repeatedly to step through the 15 different colour changing modes
- Note that by holding the RED button for 3 seconds, auto cycle will be selected which slowly steps through all 15 pattern modes

#### **Switch Activated Mode:**

- Select Display Mode as described above, and plug a switch into the 6mm switch socket.
- NOTE that as most switches have a small 3.5mm Plug, it may be necessary to use the 6mm to 3.5mm adaptor lead supplied with the unit
- Switch the toggle switch to **10 Sec**
- The display will now light up while the switch is pressed then stop 10 seconds after the switch is released.

Technical Solutions can advise on switches suitable for use with this activity.

#### **Sound Activated Mode:**

- Move the toggle switch to ON.
- Plug microphone into the XLR microphone socket in the lower left side of the tower
- Press the GREEN button up to 3 times while speaking into the mic - till the display flashes in time with your voice
- Now press the RED button repeatedly while speaking to step through the 6 different colour changing modes

Microphone and  
Power

